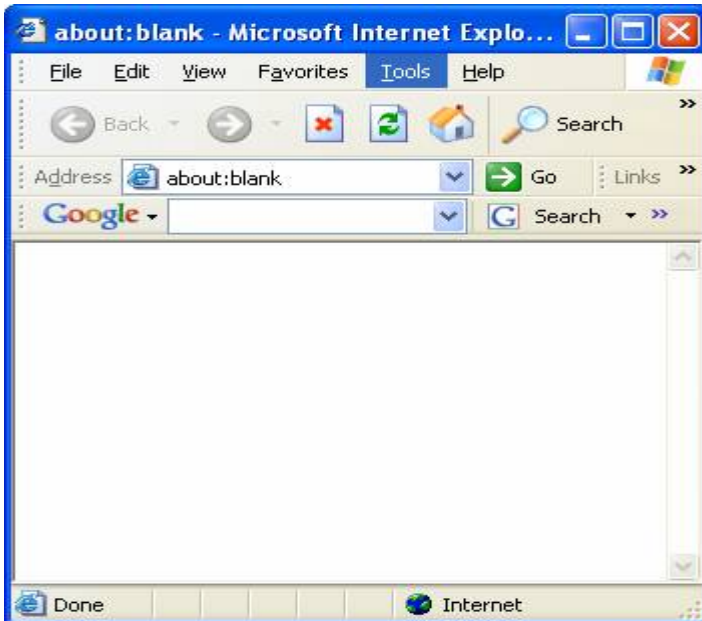


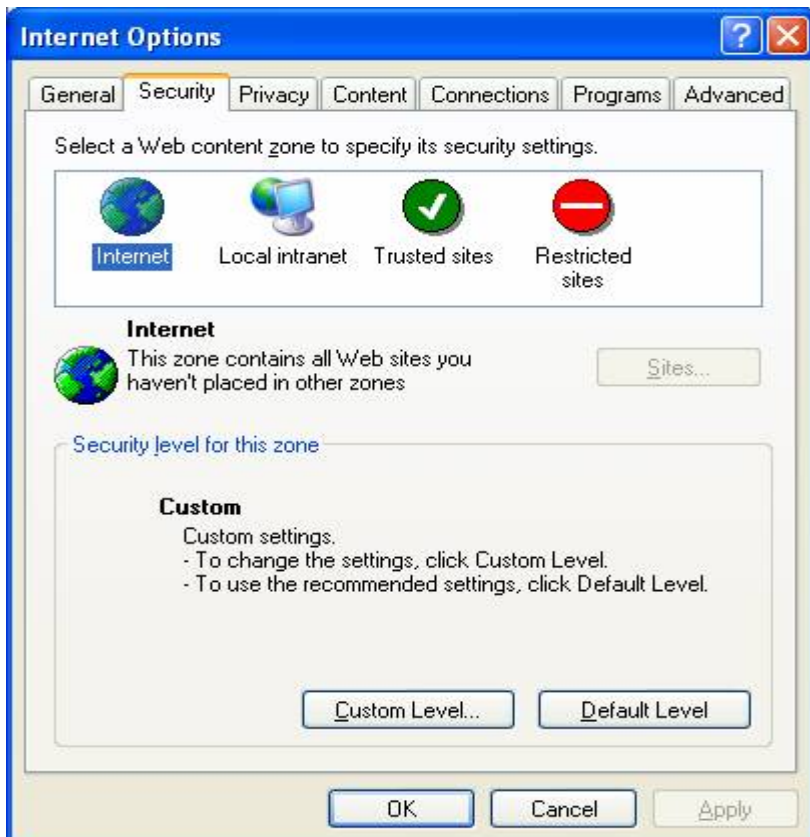
Installing MapGuide Viewer:

Welcome! If you are a first time govME Maps visitor, please follow these instructions to setup the viewer that enables you to see the maps. Once your Microsoft Internet Explorer settings are configured (see steps below) click on the Run Installer link below to complete the setup of MapGuide Viewer Install Program. You can also click [here](#) if your IE settings are correct.

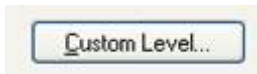
Select "Tools" from the Menu Bar



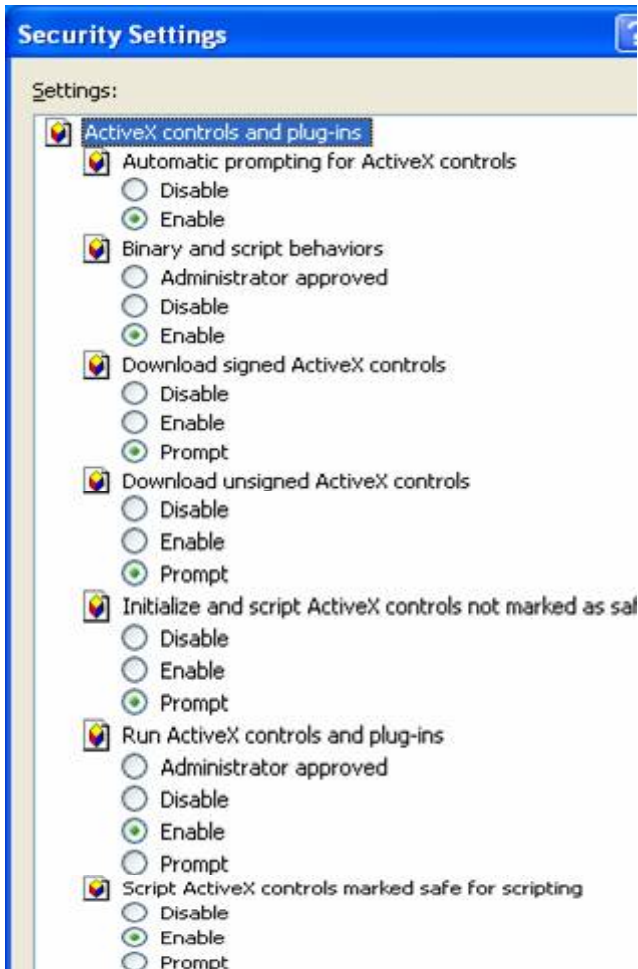
Select "Internet Options ..."
Click the "Security" tab



Select "Internet" zone if not already highlighted
Click the "Custom Level ..." button

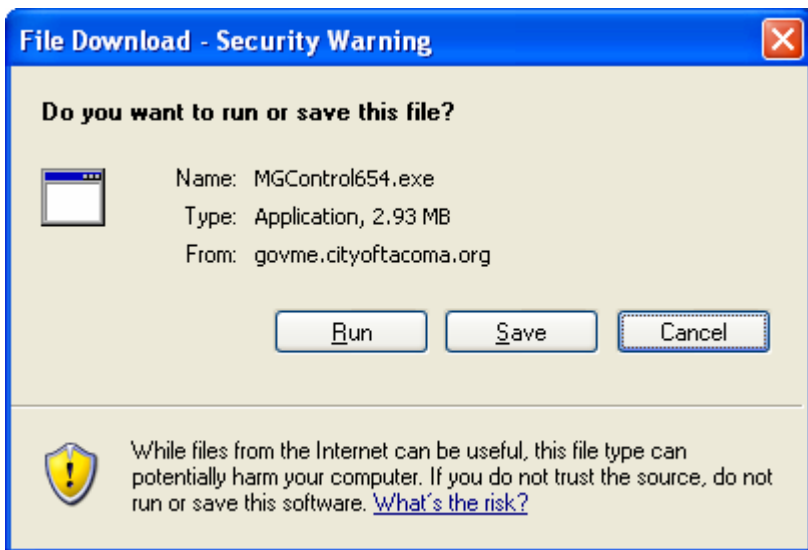


Apply the following settings under "ActiveX controls and plug-ins"

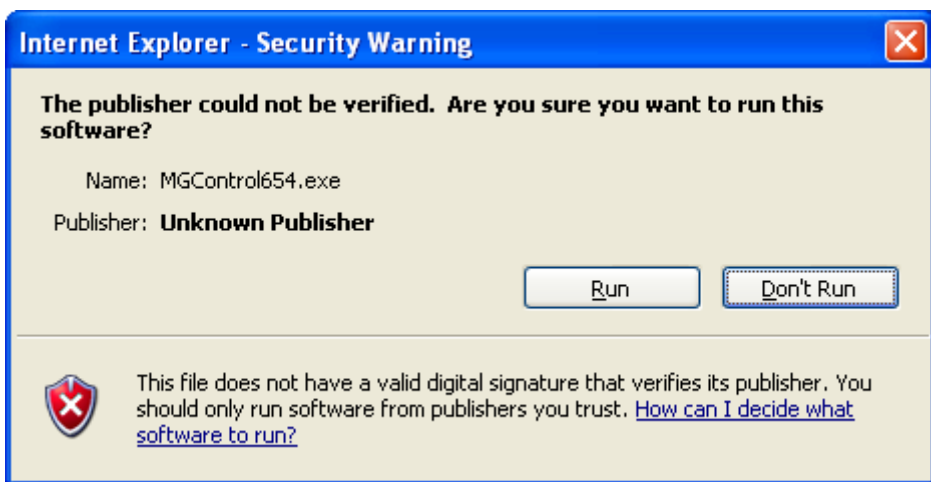


Click the "OK" button two times.

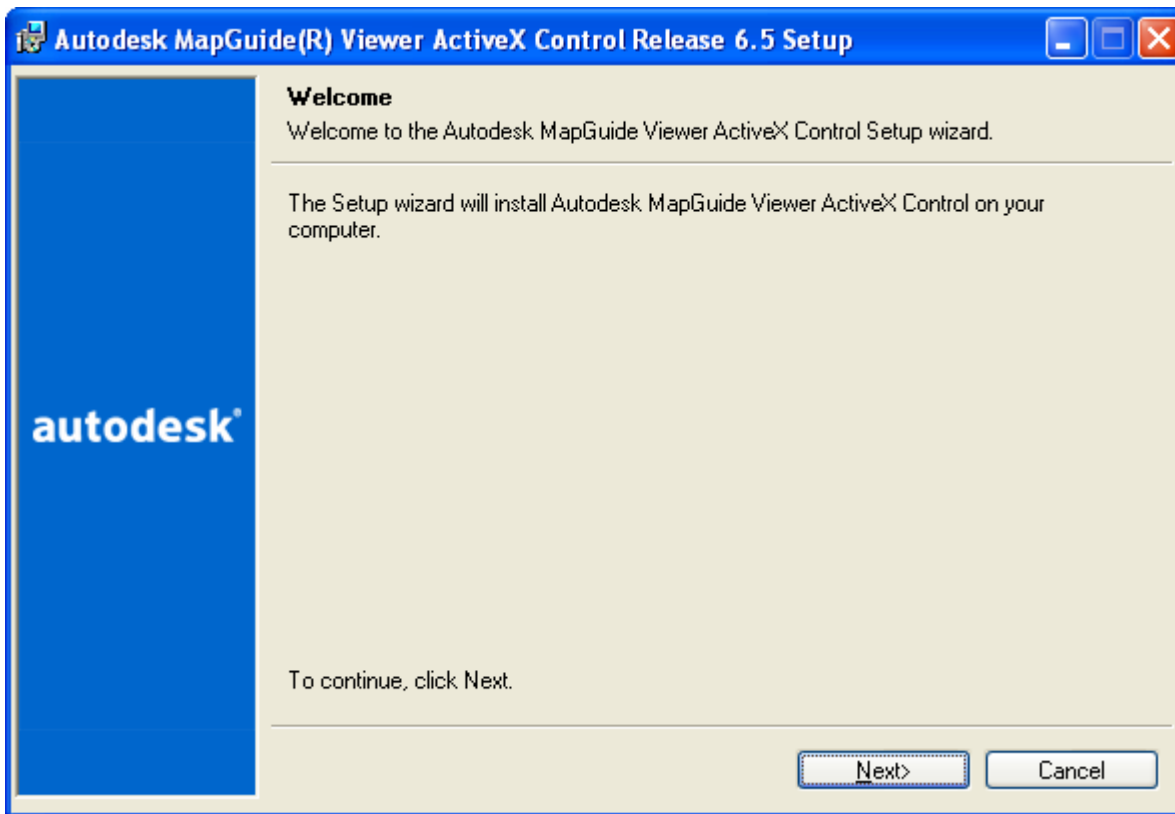
Go to [Run Installer](#) to complete the setup.



Click the Run button. A Security window will pop-up. Click Run to move to the next step.



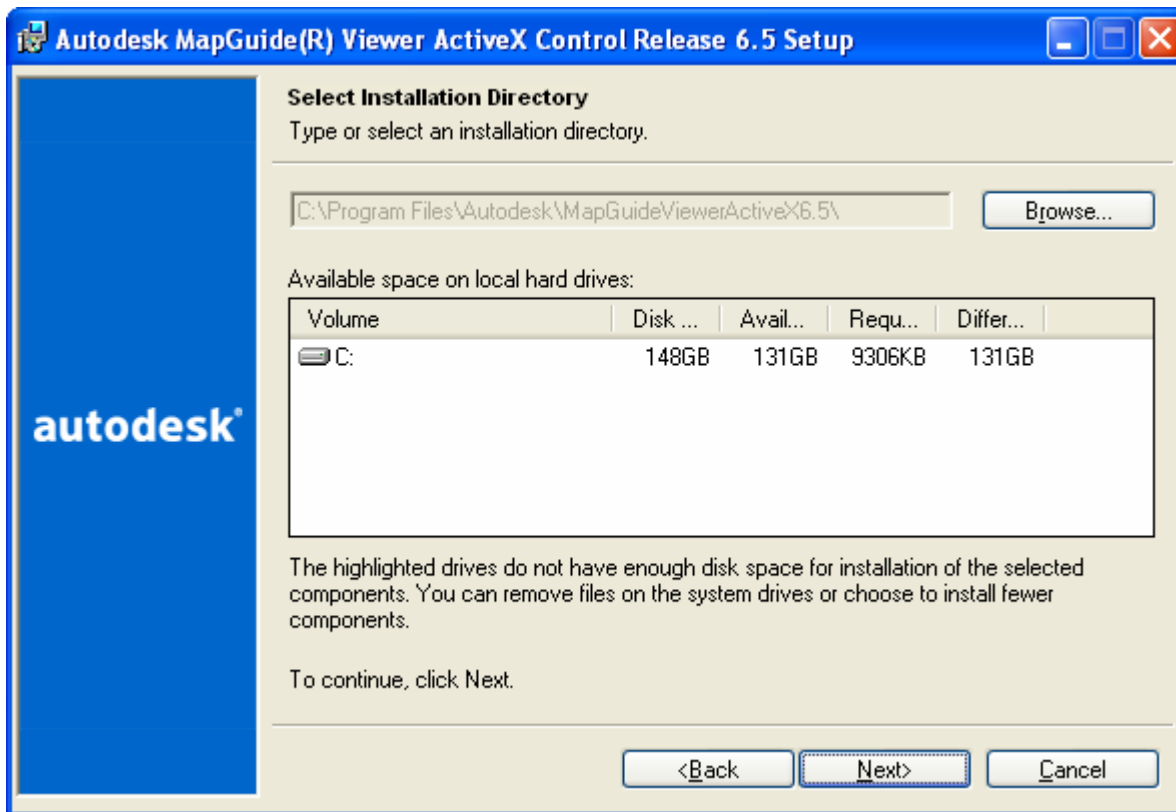
You are now in the setup program. Click Next to continue:



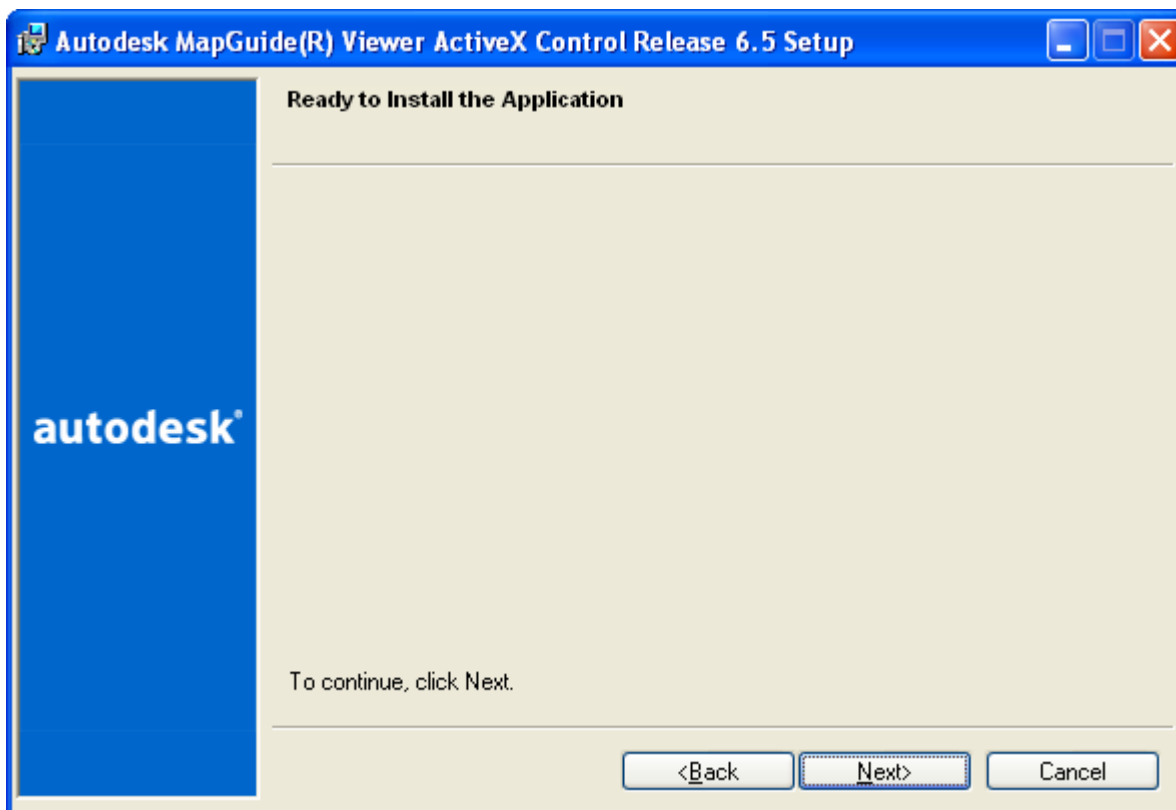
The Software License Agreement for Autodesk will pop-up. Click I accept and then Next to continue:



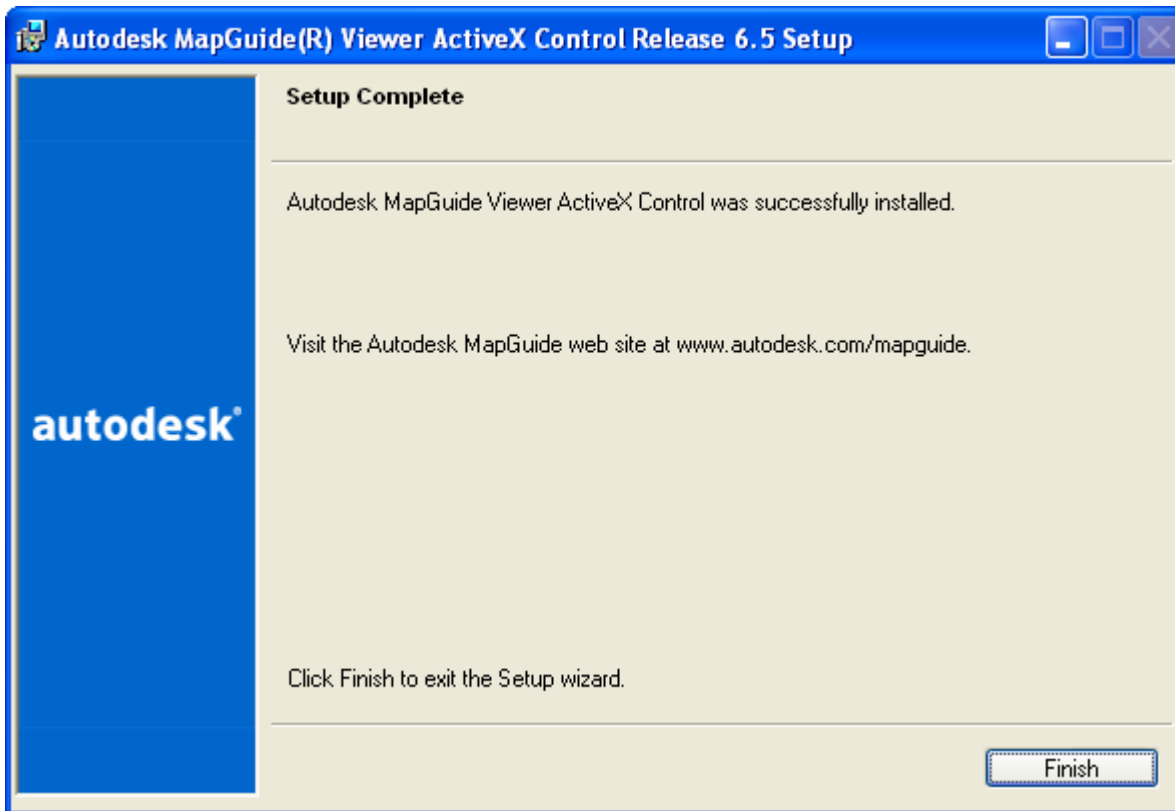
Browse to select a folder to install or click Next to use the default and continue:



Click the Next button to complete the installation:



Click Finish to end the setup program:



[Go to govME Maps](#)